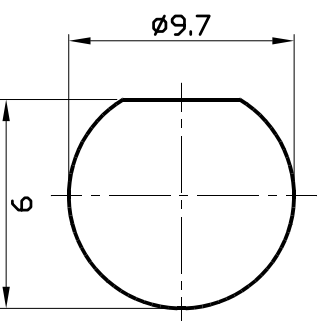
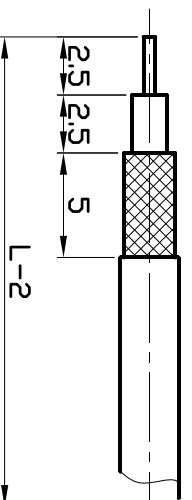


NOTES: FINISH (PLATING THICKNESS IN MICRO-INCHES)

1. BRASS PER JIS H3250 C3604BD.
2. P.BRONZE PER JIS H3270 C5441B-H.
3. NICKEL PL. 100 MIN. OVER COPPER PL. 50 MIN.
4. GOLD PL. 3 MIN. OVER NICKEL PL. 50 MIN. OVER COPPER PL. 50 MIN.



OUNTING HOLE

NO.	DESCRIPTION	MATERIAL	FINISH	Q'TY	PART NO.	DIMENSION ARE MILLIMETERS UNLESS OTHERWISE SPECIFIED TOLERANCES	SCALE	REV	UNIT	CHECKED	DRAWN	DATE
7	HEX NUT	NOTE 1	NOTE 2	1	BNC43-5		3 / 1	-	M/M			
6	WASHER	NOTE 1	NOTE 2	1	BNC43-4							
5	FERRULE	NOTE 1	NOTE 2	1	N45-316-5	1-10 = $\pm 0.2$						
4	WASHER	NOTE 1	NOTE 2	1	BNC49-4	10-30 = $\pm 0.4$						
3	CONTACT PIN	NOTE 2	NOTE 4	1	BNC41-316-4	30-200 = $\pm 1.5$						
2	INSULATOR	TEFLON		1	BNC41-316-3	200-1000 = $\pm 1.0$						
1	BODY	NOTE 1	NOTE 3	1	BNC43-316-1	1000-~ = $\pm 25$						
							DRAWING NO.					
							BNC43-316					
										科曼實業有限公司 Interconn enterprise		
										04/15/2008	04/15/2008	

04/15/2008

DATE